

വ്യാവസായിക പരിശീലന വകുപ്പ്
(കേരള സംസ്ഥാനം)

നമ്പർ: എഫ്3/11565/12

തൈക്കാട്, തിരുവനന്തപുരം-14
തീയതി : 12/06/2012.

ട്രെയിനിംഗ് ഡയറക്ടർ

എല്ലാ ഐ.ടി.ഐ പ്രിൻസിപ്പാൾമാർക്കും

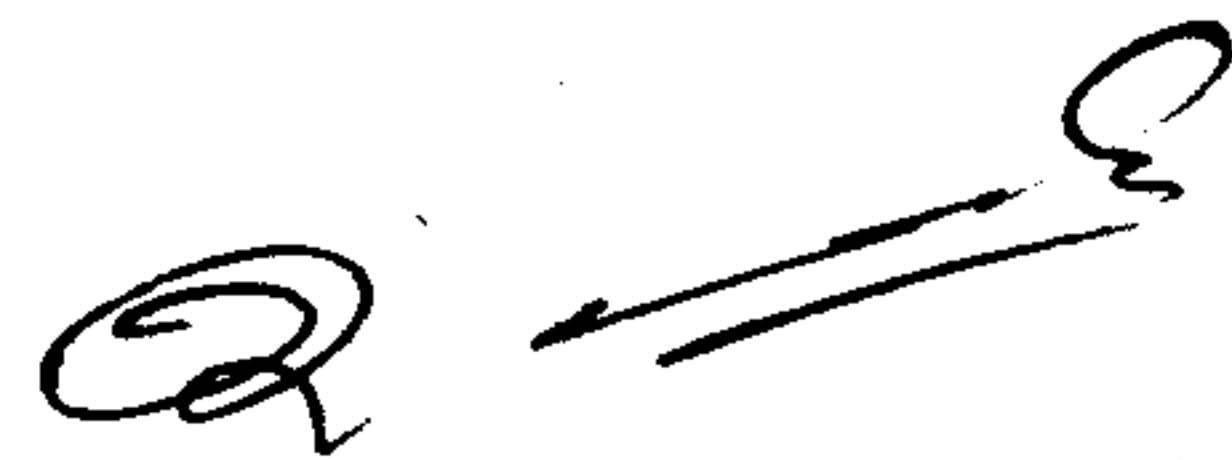
സർ,

വിഷയം:- വ്യാവസായിക പരിശീലന വകുപ്പ് - ട്രെയിനിംഗ് വിഭാഗം - എ.റ്റി.ഐ ലുധിയാനയിൽ 2012-13 വർഷ കാലയളവിൽ നടക്കുന്ന ട്രെയിനിംഗ് കോഴ്സുകൾ പരിശീലനം നൽകുന്നത് സംബന്ധിച്ച്.

സൂചന:- എ.റ്റി.ഐ ഡയറക്ടറുടെ ATIL-T-19013/2/2012-13/AVTS/413 നമ്പരായ 11.04.2012-ലെ കത്ത്.

2012-13 വർഷ കാലയളവിൽ എ.റ്റി.ഐ ലുധിയാനയിൽ വെച്ച് നടത്തപ്പെടുന്ന വിവിധ ട്രെയിനിംഗ് കോഴ്സുകളിൽ പങ്കെടുക്കുവാൻ ആഗ്രഹിക്കുന്നവർ അതിനുള്ള സമ്മതപത്രം ഇതോടൊപ്പം ഉൾക്കൊള്ളിച്ചിട്ടുള്ള പ്രൊഫോർമയിൽ പ്രിൻസിപ്പാളിന്റെ ശുപാർശയോടുകൂടി ഈ കാര്യാലയത്തിലേക്ക് അയച്ചു തരേണ്ടതാണ്. ടൈംടേബിൾ കൂടി ഇതോടൊപ്പം ഉൾപ്പെർക്കുന്നു.

വിശ്വസ്തതയോടെ,



ട്രെയിനിംഗ് ഡയറക്ടർക്കു വേണ്ടി

ഉള്ളടക്കം:

1. പ്രൊഫോർമ
2. ടൈംടേബിൾ

/s/

17

PROFORMA
OPTION FOR THE ADMISSION TO SHORT TERM COURSES AT
APEX HITECH INSTITUTE BANGLORE

1. Name
2. Designation
3. Trade/Subject (Appointed)
4. Trade/Subject (Now Working):
5. Institute
6. Date of Birth
7. Sex & Caste
(SC/ST/OBC specify if any)
8. Educational Qualifications

Sl No.	Course	Trade/Branch	Board/Council/University	Month & Year of Pass	% of Marks
A	SSLC/SSC/FHS etc.				
B	Pre Degree/+2/HSC/VHSC				
C	NTC				
D	NAC				
E	Diploma				
F	Degree (Technical)				
G	Degree (Arts & Science)				
H-	Post-Graduation (Technical)				
I	Post-Graduation (Arts & Science)				

9. Service Details

Sl No.	Office/Institution	Designation	From	To
A				
B				
C				
D				
E				
F				
G				
H				

10. Training Details (CTI/POT/IMG/CSTARI/APEX/ATI Etc.)

Sl No.	Name of Course	Institute	From (Date)	To (Date)	Result, if any
A					
B					
C					
D					
E					
F					

Option for Apex High Tech Course

Sl. No.	Name of Course	Period
1		
2		
3		
4		

I wish to participate the short term courses as mentioned above.....
at Apex Hi Tech Institute, Bangalor.

Name and signature of the Employee

Place:

Date:

Recommendations of the Principal:

Name and Signature

Place:

Date:

(Office Seal)

ADVANCED TRAINING INSTITUTE ADVANCED VOCATIONAL TRAINING CALANDER FOR THE

Code No.	Course Name	Intake Capacity	Duration in Weeks	From	To
TDM TOOL & DIE MAKING					
TDM-1	Jig & Fixture making	10	2	02.07.2012 08.10.2012 28.01.2013	13.07.2012 19.10.2012 08.02.2013
TDM-2	Press Tool Making "Basic"	10	2	23.04.2012 03.09.2012	04.05.2012 14.09.2012
TDM-3	Press Tool Making "Advanced"	10	2	07.05.2012 17.09.2012	18.05.2012 28.09.2012
TDM-4	Heat Treatment of Steel	10	1	21.05.2012 04.06.2012	25.05.2012 08.06.2012
TOOL ROOM OPERATOR					
TRO-1	Operation on Jig Boring Machine (Waida Japan)	3	2	15.10.2012	26.10.2012
TRO-2	Precession Marching on boring and pentagraph Milling Machine	3	2	31.12.2012	11.01.2013
TRO-3	Complex profile grinding on (O.P.G.) (Optical profile grinder machine)	3	2	02.04.2012	13.04.2012
MEI METROLOGY AND ENGINEERING INSPECTION					
MEI-1	Linear & Angular Measurement	8	2	09.04.2012	20.04.2012
		8	2	02.07.2012	13.07.2012
		8	2	08.10.2012	19.10.2012
		8	2	07.01.2013	18.01.2013
MEI-2	Screw Thread Metrology	8	2	07.05.2012	18.05.2012
		8	2	06.08.2012	17.08.2012
		8	2	05.11.2012	16.11.2012
		8	2	04.02.2013	15.02.2013
MEI-3	Co-ordinate Measuring (C.M.M.)	8	2	04.06.2012	15.06.2012
		8	2	03.09.2012	14.09.2012
		8	2	10.12.2012	21.12.2012
		8	2	11.03.2013	22.03.2013
MTM MACHINE TOOL MAINTENANCE					
MTM-1	Hydraulic & Electro Hydraulic Circuits & its applications	6	2	16.07.2012	27.07.2012
MTM-2	Repair & Maintenance of Machine Tools	6	2	27.08.2012	07.09.2012
MTM-3	PLC Pneumatic circuits & its applications	6	2	19.11.2012	30.11.2012
MTM-4	PLC & Proportional Hydraulic circuits and its applications	6	2	11.03.2013	22.03.2013
AW ADVANCED WELDING					
AW-1	Submerged Arc welding	10	1	09.04.2012	13.04.2012
AW-2	Co2 Welding	10	2	14.05.2012	25.05.2012

AW-3	Tig Welding (GTAW)	10	3	11.06.2012	29.06.2012
AW-4	Pipe welding Arc	10	3	13.08.2012	31.08.2012
AW-5	CO2 Welding	10	2	10.09.2012	21.09.2012
AW-6	Welding for Maintenance	10	3	08.10.2012	26.10.2012
AW-7	Tig welding (GTAW)	10	3	05.11.2012	23.11.2012
AW-8	Plasma cutting	10	1	03.12.2012	07.12.2012
AW-9	Tig welding (GTAW)	10	3	07.01.2013	25.01.2013
AW-10	Resistance spot welding	10	1	04.02.2013	08.02.2013
MATERIAL TESTING COURSE					
MT-1	Material Testing Basic	9	2	02.07.2012	13.07.2012
				06.08.2012	17.08.2012
				03.09.2012	14.09.2012
				08.10.2012	19.10.2012
				19.11.2012	30.11.2012
				03.12.2012	14.12.2012
				07.01.2013	18.01.2013
04.02.2013	15.02.2013				
11.03.2013	22.03.2013				
ISRED INDIAN STANDARDS AND READING OF ENGINEERING DRAWING					
ISRED-1	Indian Standards and Reading of Engineering Drawing	10	2	04.06.2012	15.06.2012
				09.07.2012	20.07.2012
				06.08.2012	17.08.2012
				10.09.2012	21.09.2012
				08.10.2012	19.10.2012
				12.11.2012	23.11.2012
				10.12.2012	21.12.2012
				14.01.2013	25.01.2013
				11.02.2013	22.02.2013
				04.03.2013	15.03.2013
HE HEAT ENGINE					
HE-1	Servicing and Testing of Electrical Unit of Petrol Engine	7	2	09.04.2012	20.04.2012
HE-2	Servicing and Testing of Petrol Engine	7	2	04.06.2012	15.06.2012
HE-3	Servicing of Diesel Engine (Mobile Type)	7	2	09.07.2012	20.07.2012
HE-4	Servicing and Testing of Electrical Unit of Petrol Engine	7	2	03.09.2012	14.09.2012
HE-5	Servicing & Testing of Petrol Engine	7	2	08.10.2012	19.10.2012
HE-6	Servicing of Diesel Engine (Mobile Type)	7	2	03.12.2012	14.12.2012
ABT-5	Basic Petrol & Diesel Engine	7	2	07.01.2013	18.01.2013
ABT-6	Basic Transmission, suspension, steering system & Brakes	7	2	04.03.2013	15.03.2013

UTE, GILL ROAD, LUDHIANA L TRAINING SYSTEM (AVTS)

PERIOD FROM 1.4.2012 TO 31.3.2013

AEM ADVANCED ELECTRONIC MAINTENANCE					
AEM-1	Digital Electronics	8	2	09.04.2012 01.10.2012 04.02.2013	20.04.2012 12.10.2012 15.02.2013
AEM-2	Introduction to Internet & Web page Design	8	1	09.07.2012 05.11.2012 03.12.2012	13.07.2012 09.11.2012 07.12.2012
AEM-3	Microprocessor and its Applications	8	2	23.07.2012 19.11.2012	03.08.2012 30.11.2012
AEM-4	Linear Integrated circuits	8	2	04.06.2012 15.10.2012 07.01.2013	15.06.2012 26.10.2012 18.01.2013
CAC-1	Computer Appreciation Course (MS Office, Internet)	8	1	23.04.2012 14.05.2012 03.09.2012	27.04.2012 18.05.2012 07.09.2012

Contd.P/3.

EM ELECTRICAL MAINTENANCE					
EM-1	Rewinding of Transformer	6	1	25.06.2012 28.01.2013	29.06.2012 01.02.2013
EM-2	Working of Electrical A.C. Machine	6	2	16.04.2012 09.07.2012 08.10.2012	27.04.2012 20.07.2012 19.10.2012
EM-3	Rewinding of Electrical 3 Phase A.C. Motors	6	2	30.04.2012 23.07.2012 25.02.2013	11.05.2012 03.08.2012 08.03.2013
EM-4	Distribution of Electrical Supply	6	1	14.05.2012 06.08.2012 17.12.2012 11.03.2013	18.05.2012 09.08.2012 21.12.2012 15.03.2013
EM-5	Application of Basic A.C. Motor Controls	6	2	04.06.2012 27.08.2012 07.01.2013	15.06.2012 07.09.2012 18.01.2013
EM-6	Application of Basic D.C. Motor Controls	6	2	24.09.2012 19.11.2012 11.02.2013	05.10.2012 30.11.2012 22.02.2013

OPERATION AND MAINTENANCE OF SOLAR ENERGY EQUIPMENT

SE-1	Application and Maintenance of Solar Energy Equipment	6	1	18.06.2012 02.07.2012 12.11.2012	22.06.2012 06.07.2012 16.11.2012
------	---	---	---	--	--

HI-TECH COURSE

HI-I	Programming & operation of Vertical machining Centre (VMC500- FANUC CONTROL SYSTEM)	6	2	30.04.2012 06.08.2012 29.10.2012 31.12.2012 04.03.2013	11.05.2012 17.08.2012 09.11.2012 11.01.2013 15.03.2013
------	---	---	---	--	--

HI-2	Programming & operation of Horizontal Machining Centre(HMC-500 Sinumerick Control System) Milling Machine	6	2	02.04.2012 03.09.2012 03.12.2012	13.04.2012 14.09.2012 14.12.2012
HI-3	Programming & Operation of CNC Lathe (Fanuc Series 01 MATE-TC CONTROL)	6	2	09.07.2012 01.10.2012 04.02.2013	20.07.2012 12.10.2012 15.02.2013
HI-3	Auto CAD (2D)	6	2	07.05.2012 21.08.2012 03.12.2012	08.05.2012 31.08.2012 14.12.2012
HI-4	Auto CAD (3D)	6	2	04.06.2012 03.09.2012 07.01.2013	15.06.2012 14.09.2012 18.01.2013
HI-5	Master CAM	6	2	09.07.2012 12.11.2012 11.02.2013	20.07.2012 23.11.2012 22.02.2013

AGRICULTURE MACHINERY

MAM-1	Operation, Maintenance & driving of combine harvester	10	2	02.04.2012	13.04.2012
-------	---	----	---	------------	------------

Contd.P/4.

MAM-2	Servicing & Installation of irrigation machinery	10	2	06.08.2012	17.08.2012
MAM-3	Overhauling of tractor/Power tiller/combine harvester.	10	2	04.02.2013	15.02.2013
MRC	MEDIA RESOURCE CENTRE				
MRC-1	Use of Modern Audio Visual Aids	10	1	09.04.2012 10.09.2012 08.10.2012 07.01.2013	13.04.2012 14.09.2012 12.10.2012 11.01.2013

HOW TO APPLY

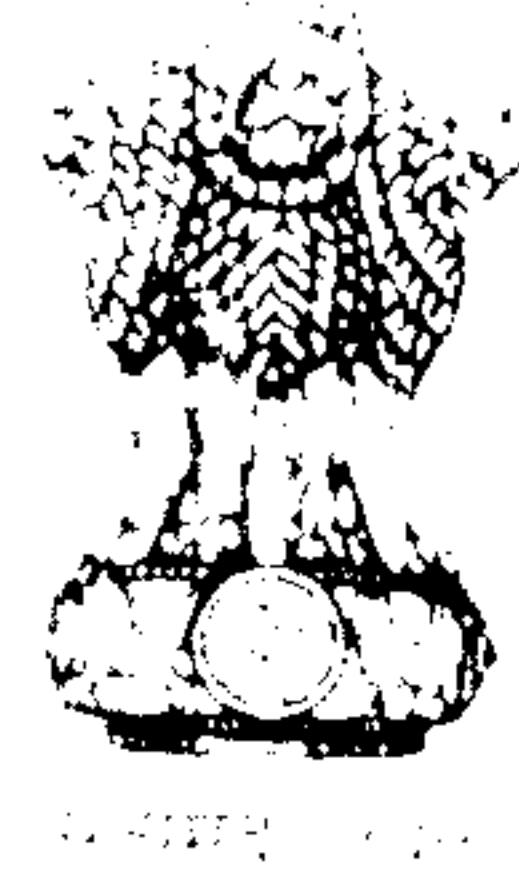
The candidate should apply on prescribed application form obtained from the office of the Director, A.T.I., Ludhiana-141 003. on a payment of Rs. 100/- by cash/IPO/DD well in advance. However the sponsoring Organization (Government Organization, Small Scale Industries, Large Organization, State Directors) can reserve their seats well in advance against their request letter and the trainee has to fill up the prescribed form at the time of admission to the Course.

HOW TO REACH

To reach A.T.I., Ludhiana, Three Wheelers/ Scooters and Taxis are available from Railway Station and Bus Stand passing through Gill Bye-pass (Campa-cola Chowk). Local Mini buses are also plying from Railway Station and Bus Stand which pass through the Gill Road, Distance from Railway Station and Bus Stand to A.T.I. is 5 Km. and 4 Km. respectively.

DIRECTOR,
Advanced Training Institute,
Gill Road, Ludhiana - 141 003.
Punjab, (INDIA)

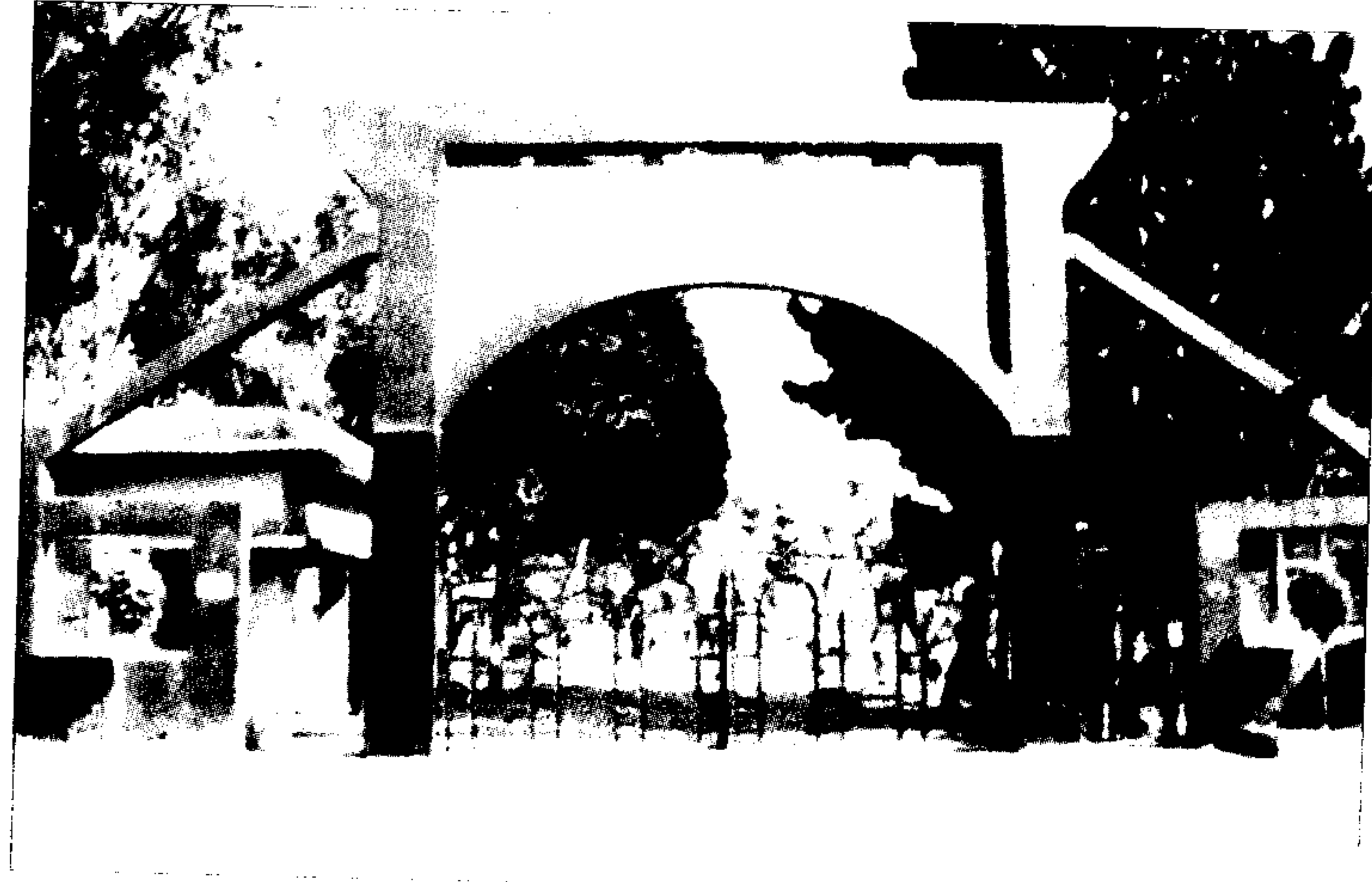
Grams : CTI(M)
Phone : 0161-2501871, 2490187
Fax : 0161-2501871
E-mail id : atiludhiana@.nic.in



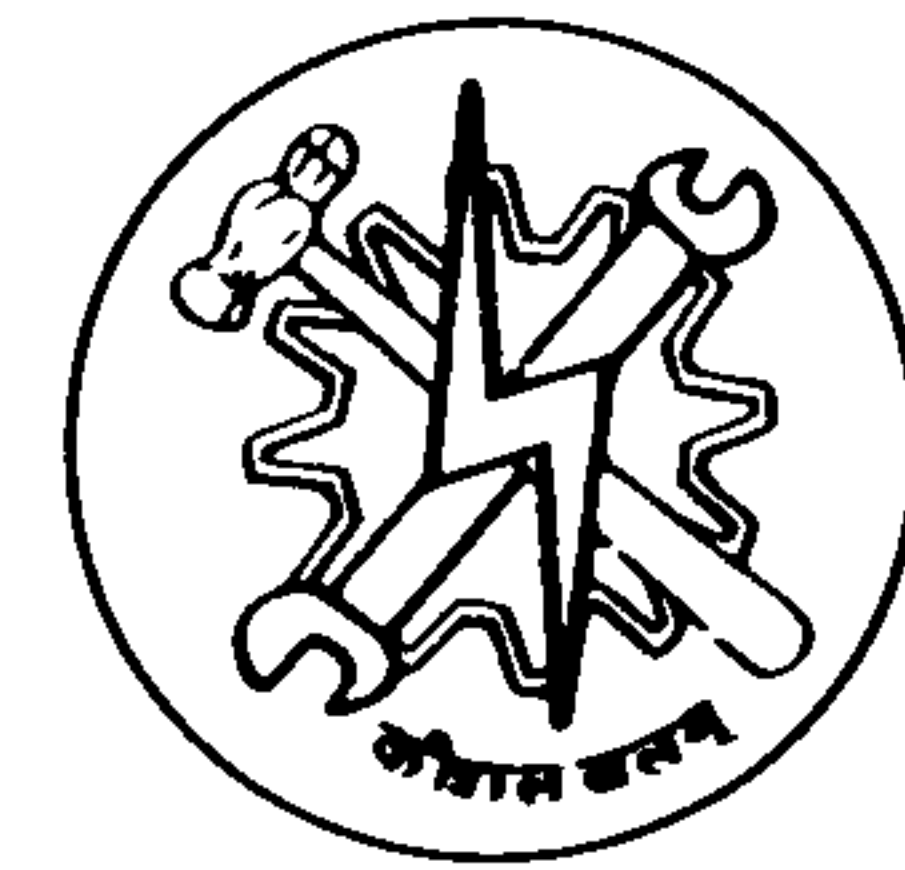
भारत सरकार
GOVERNMENT OF INDIA

श्रम एवं रोजगार मंत्रालय
MINISTRY OF LABOUR & EMPLOYMENT

रोजगार एवं प्रशिक्षण महानिदेशालय
Directorate General of
Employment & Training



प्रशिक्षण
कलैण्डर
2012-13



Training
Calendar
2012-13

ATI

उच्च प्रशिक्षण संस्थान
ADVANCED TRAINING INSTITUTE
गिल मार्ग, लुधियाना, पिन 141003
Gill Road, Ludhiana, Pin 141003

ABOUT THE INSTITUTE

The Advanced Training Institute (ATI), Ludhiana formerly called Central Training Institute for Instructors (CTI) was established by Government of India, Ministry of Labour & Employment, Directorate General of Employment and Training in 1963 primarily with the objective for the training of Crafts Instructors in different Engineering trades for industrial Training Institutes (ITI's), Industrial establishment and also for developing skilled manpower for the industries.

Subsequently in 1978 the activities of the ATI were Expended under the UNDP and ILO collaborated Advanced Vocational Training System (AVTS) to upgrade and up-date the skill and knowledge of serving industrial workers and technicians. Under this Scheme Short term courses on Modular Pattern ranging from 1 to 4 weeks duration are offered (listed in the calendar). A Modular approach is used so that industrial workers/technicians can choose the required modular course(s) to acquire the desired proficiency in Advanced Skill/Techniques at their convenience. Staff trained in India and abroad at the institute can develop a training package tailored to suit the needs of industries. The institute for over a decade has been engaged in specialized training and re-training programmes to upgrade the skills of industrial workers. The A.T.I. is responsive to the rapidly changing industrial environment and has plans to establish high technology oriented facilities needed by modern industry in consultation with C.I.I. From the current year 2009 the training courses for the trainees under centre of excellence scheme also started in Agriculture sector. The latest equipments related to Agriculture sector including laser leveler, rotavator, combine etc. have been procured and put in use for training purposes.

The institute is situated in a sprawling area of 32 acres of land at a distance of 5 kms. from the Railway Station. The campus of the institute is having well equipped workshops, laboratories (having both indigenous and imported equipment), teaching aids, dispensary and staff quarters. The Institute is also equipped with Audio-Visual Aids, Library, a Hostel and Bank.

ENTRY QUALIFICATION

Degree or Diploma in relevant Trade

OR

National Trade Certificate/National Apprenticeship Certificate with 2 to 3 years relevant trade experience. Qualifications can be relaxed for candidates having relevant experience in concerned trade depending upon availability of seats.

FEE STRUCTURE

Tuition Fee for trainees deputed by :-

Government Organisation : Rs. 650/- per week per trainee.

Small Scale industry/
Private Candidate : Rs. 350/- per week per trainee.

Large and Medium Scale : Rs. 1250/- per week
Industry per trainee.
(For Public & Private Sectors)

Sponsored instructor's of : NIL

Government I.T.I. is

For Tailor Made Courses the fees will be double of normal Courses.

HOSTEL RENT :

Attached bathroom : Rs.30/-per day per trainee

Common bathroom : Rs. 25/- per day per trainee

Service Charges : Rs. 10/- per trainee

Gymkhana Fees : Rs. 5/- per trainee/
per month/or part thereof

**Application Fee &
Registration Charges** : Rs. 100/- per form.

MODE OF PAYMENT

Payment may be made in cash or through Cheque / Demand Draft in favour of "Drawing Disbursing Officer, A.T.I." Ludhiana.